
LEAP

WATERTITE



HOT AND COLD WATER PEX PLUMBING SYSTEM

LEAP WATERTITE

HIGH INTEGRITY, HIGH PERFORMANCE PEX WATER PIPING SYSTEM

WATERTITE from LEAP is a high integrity and high performance piping system designed to offer installers the benefits of a high temperature and a flexible non-metallic pipe. WATERTITE pipe is manufactured using cross-linking technology first developed in Europe and performs in ways that provide superior reliability, durability and safety. All pipe and fittings are manufactured using the latest extrusion, moulding and machining techniques to ensure a perfect connection every time, providing you with a system that is superior than most conventional pipe systems with a design life in excess of 50 years.

WATERTITE FEATURES

Corrosion free

50 Year design life

Light, strong and robust

Pipe fittings and tools compatible with GASTITE

Wide range of compact DR brass fittings

Burst pressure up to 70 bar

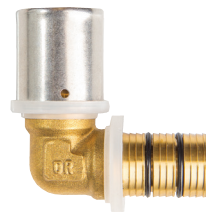
Quality appraised

Manual and power tools for easy and quick installation

PIPE CONNECTION SYSTEMS



PUSH FIT FITTINGS FOR CONNECTING BOTH MULTILAYER PEX AND MONOLAYER PEX PIPE

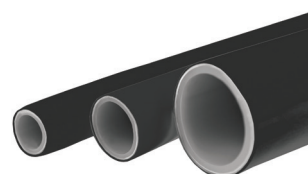


PRESS SLEEVE FITTINGS FOR CONNECTING BOTH MULTILAYER PEX AND MONOLAYER PEX PIPE

PIPE SYSTEMS



MULTILAYER PEX PIPE (PEX-AL-PEX)



MONOLAYER PEX PIPE (PEX-A or PEX-B)

PUSH FIT

WATERTITE PUSH FIT (WTPF) FITTING SELECTOR



Straight Connector

16mm x 16mm
20mm x 20mm
25mm x 25mm

WTPF SC1616
WTPF SC2020
WTPF SC2525



Male Adaptor

16mm x 1/2"
20mm x 3/4"
25mm x 1"

WTPF MA16.15
WTPF MA20.20
WTPF MA25.25



Straight Reducer

20mm x 16mm
25mm x 20mm

WTPF SR2016
WTPF SR2520



Male Bend Adaptor

16mm x 1/2"
20mm x 3/4"
25mm x 3/4"

WTPF MB16.15
WTPF MB20.20
WTPF MB25.20



Equal Bend

16mm x 16mm
20mm x 20mm
25mm x 25mm

WTPF EB1616
WTPF EB2020
WTPF EB2525



Branch Reducing Tee

20mm x 20mm x **16mm** WTPF RT202016
25mm x 25mm x **20mm** WTPF RT252520



Equal Tee

16mm x 16mm x 16mm WTPF ET161616
20mm x 20mm x 20mm WTPF ET202020
25mm x 25mm x 25mm WTPF ET252525



End Reducing Tee

20mm x 16mm x **20mm** WTPF RT201620



Female Adaptor

16mm x 1/2"
20mm x 3/4"
25mm x 1"

WTPF FA16.15
WTPF FA20.20
WTPF FA25.25



Branch/End Reducing Tee

20mm x 16mm x **16mm** WTPF RT201616



Female Bend Adaptor

16mm x 1/2"
20mm x 3/4"
25mm x 3/4"

WTPF FB16.15
WTPF FB20.20
WTPF FB25.25



Female Wingback Elbow

16mm x 1/2"
20mm x 3/4"

WTPF FWE16.15
WTPF FWE20.20

Note: *bold* = branch size

PUSH FIT

WATERTITE PUSH FIT (WTPF) FITTING SELECTOR



PEX - PB Converter

16mm(PEX) x 18mm(PB) WTPF PXPB16.18
20mm(PEX) x 22mm(PB) WTPF PXPB20.22



Spigot Reducer

20mm (Spigot) x 16mm WTPF SPR2016
25mm (Spigot) x 16mm WTPF SPR2516
25mm (Spigot) x 20mm WTPF SPR2520



PEX - CU Converter

16mm x 1/2" AU CU WTPF PXCU16.15 AU
20mm x 3/4" AU CU WTPF PXCU20.20 AU



Blanking Plug

16mm WTPF BP16
20mm WTPF BP20
25mm WTPF BP25



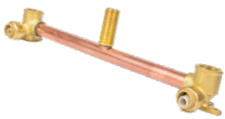
Male Wingback Elbow

16mm x 1/2" (65mm) WTPF MWE16.15 (90)



Male Wingback Elbow Extended

16mm x 1/2" (200 EXT) WTPF MWE16.15 (200)



WTPF - Shower Bottom Entry

16mm x 150mm WTPF SA16.150
16mm x 200mm WTPF SA16.200



WTPF - Demounting Tool

16mm T WTPF DT16
20mm T WTPF DT20
25mm T WTPF DT25
1/2" AU COPPER T WTPF DT15.AUCU
3/4" AU COPPER T WTPF DT20.AUCU



WTPF - Inline Tap Assembly

16mm x 200mm WTPF ITA16.200
16mm x 300mm WTPF ITA16.300

Note: *bold* = branch size

PRESS SLEEVE

WATERTITE PRESS SLEEVE (WTPS) FITTING SELECTOR



Straight Connector

16mm x 16mm
20mm x 20mm
25mm x 25mm
32mm x 32mm

WTPS SC1616
WTPS SC2020
WTPS SC2525
WTPS SC3232



Female Bend Adaptor

20mm x 3/4"
25mm x 1"
32mm x 1"

WTPS FB20.20
WTPS FB25.25
WTPS FB32.25



Straight Reducer

20mm x 16mm
25mm x 16mm
25mm x 20mm
32mm x 20mm
32mm x 25mm

WTPS SR2016
WTPS SR2516
WTPS SR2520
WTPS SR3220
WTPS SR3225



Female Elbow Swivel Adaptor

16mm x 1/2"
20mm x 1/2"
20mm x 3/4"

WTPS FESA16.15
WTPS FESA20.15
WTPS FESA20.20



Equal Bend

16mm x 16mm
20mm x 20mm
25mm x 25mm
32mm x 32mm

WTPS EB1616
WTPS EB2020
WTPS EB2525
WTPS EB3232



Female Swivel Adaptor

20mm x 1/2"
20mm x 1/2"
20mm x 3/4"

WTPS FSA16.15
WTPS FSA20.15
WTPS FSA20.20



Equal Tee

16mm x 16mm x 16mm
20mm x 20mm x 20mm
25mm x 25mm x 25mm
32mm x 32mm x 32mm

WTPS ET161616
WTPS ET202020
WTPS ET252525
WTPS ET323232



Female Wingback Elbow

16mm x 1/2"
20mm x 1/2"
20mm x 3/4"
25mm x 3/4"

WTPS FWE16.15
WTPS FWE20.15
WTPS FWE20.20
WTPS FWE25.20



Female Adaptor

16mm x 1/2"
20mm x 1/2"
20mm x 3/4"
25mm x 1/2"
25mm x 3/4"
32mm x 1"

WTPS FA16.15
WTPS FA20.15
WTPS FA20.20
WTPS FA25.15
WTPS FA25.20
WTPS FA32.25



Male Bend Adaptor

20mm x 1/2"
20mm x 3/4"
25mm x 3/4"
25mm x 1"
32mm x 1"

WTPS MB20.15
WTPS MB20.20
WTPS MB25.20
WTPS MB25.25
WTPS MB32.25

PRESS SLEEVE

WATERTITE PRESS SLEEVE (WTPS) FITTING SELECTOR



Male Adaptor

| | |
|---------------|--------------|
| 16mm x 1/2" | WTPS MA16.15 |
| 20mm x 1/2" | WTPS MA20.15 |
| 20mm x 3/4" | WTPS MA20.20 |
| 25mm x 1/2" | WTPS MA25.15 |
| 25mm x 3/4" | WTPS MA25.20 |
| 25mm x 1" | WTPS MA25.25 |
| 32mm x 3/4" | WTPS MA32.20 |
| 32mm x 1" | WTPS MA32.25 |
| 32mm x 1 1/4" | WTPS MA32.32 |



Press Sleeve (Spares)

| | |
|------|-----------|
| 16mm | WTPS PS16 |
| 20mm | WTPS PS20 |
| 25mm | WTPS PS25 |
| 32mm | WTPS PS32 |



Branch/End Reducing Tee

| | |
|---------------------------|---------------|
| 20mm x 16mm x 16mm | WTPS RT201616 |
| 25mm x 20mm x 20mm | WTPS RT252020 |
| 32mm x 25mm x 25mm | WTPS RT322525 |



Blanking Plug

| | |
|------|-----------|
| 16mm | WTPS BP16 |
| 20mm | WTPS BP20 |
| 25mm | WTPS BP25 |
| 32mm | WTPS BP32 |



End Reducing Tee

| | |
|---------------------------|---------------|
| 20mm x 16mm x 20mm | WTPS RT201620 |
| 25mm x 20mm x 25mm | WTPS RT252025 |
| 32mm x 25mm x 32mm | WTPS RT322532 |



WTPS - Branch Reducing Tee

| | |
|---------------------------|---------------|
| 20mm x 20mm x 16mm | WTPS RT202016 |
| 25mm x 25mm x 16mm | WTPS RT252516 |
| 25mm x 25mm x 20mm | WTPS RT252520 |
| 32mm x 32mm x 20mm | WTPS RT323220 |
| 32mm x 32mm x 25mm | WTPS RT323225 |



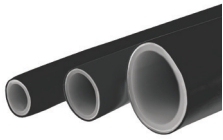
Male Wingback Elbow

| | |
|-------------------------|---------------------|
| 16mm x 1/2" | WTPS MWE16.15PT |
| 20mm x 1/2" (180mm EXT) | WTPS MWE20.15 (180) |
| 20mm x 1/2" | WTPS MWE20.15PT |
| 20mm x 3/4" (180mm EXT) | WTPS MWE20.20 (180) |
| 20mm x 3/4" MI | WTPS MWE20.20PT |
| 25mm x 3/4" MI | WTPS MWE25.20PT |

Note: *bold* = branch size

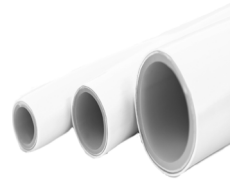
WATERTITE PIPE

PIPE SELECTOR



Pipe, Straight Length

16mm – 5m Length PLWB16.05
20mm – 5m Length PLWB20.05



PEX-Al-PEX Pipe, Length

16mm – 5m Length PLWA16.05
20mm – 5m Length PLWA20.05
25mm – 5m Length PLWA25.05
32mm – 5m length PLWA32.05



Pipe Coil

16mm – 50m Coil PCWB16.50
20mm - 25m Coil PCWB20.25
20mm – 50m Coil PCWB20.50



PEX-Al-PEX Pipe Coil

16mm – 50m Coil PCWA16.50
16mm – 100m Coil PCWA16.100
16mm – 300m Coil PCWA16.300
20mm – 25m Coil PCWA20.25
20mm – 50m Coil PCWA20.50
25mm – 25m Coil PCWA25.25
25mm – 50m Coil PCWA25.50



PEX Coil (Lilac)

20mm – 50m Coil PCWB20.50-L



PEX-Al-PEX Pipe Coil - Insulated (Red)

16mm – 50m Coil PCWA16.50 INS-R
20mm – 50m Coil PCWA20.50 INS-R
25mm – 50m Coil PCWA25.50 INS-R

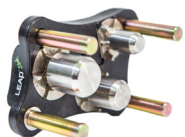


PEX Coil (Red)

16mm – 50m Coil PCWB16.50-R
20mm - 50m Coil PCWB20.50-R

TOOLS

TOOL SELECTOR



Metal Pipe Reaming Tool
16mm, 20mm, 25mm T MPRT16.20.25



Wavin Pipe Reaming Tool
16mm, 20mm, 25mm, WPRT16.20.25.32
32mm



Manual Press Tool
16mm – 32mm MPT16.20.25.32
20mm MPT20
25mm MPT25



Pipe Cutter
Pipe Cutter PCT16.32



Mini Battery Press Tool
16-32 + BAG + CHG MBPT16-32

PIPE CLIP SELECTOR



Pipe Clips (Black)
16mm PX65.16-B
20mm PX65.20-B
25mm PX65.25-B

PIPE CONNECTIONS

PIPE CONNECTION USING PUSH-FIT FITTINGS



1. Measure and cut the pipe at one of the insertion marks. Mark the pipe manually if there are no insertion marks printed on the pipe. Ensure pipe end is square and free from burrs. An uneven or jagged cut may result in an improper connection. Use only purpose designed cutters.



2. The cut pipe must be reamed and beveled using an appropriate LEAP reamer to ensure a round and smooth pouring angle on the pipe end **both** on the inside and outside.

Please take extra care while reaming.



3. Select the required fitting and push the fitting fully into the pipe with a slight twisting action. A secure connection will be made when pipe reaches the end-stop or when end of fitting has reached the next insertion mark on the pipe.



4. Tug back on the pipe to ensure the grab-ring has engaged correctly.

PUSH FIT PIPE DISCONNECTION



1. Place the appropriate sized release tool around the pipe with the face positioned against the release collar on the fitting.



2. Push the clip against the release collar and simultaneously pull the pipe away from the fitting using a slight twisting action.



3. Ensure the pipe end is free of damage or scratch marks. If the pipe is damaged, the damaged end should be cut and a new pipe section be used to make a new connection.



4. After disconnection ensure the pipe end is free of damage or scratch marks. If the pipe is damaged, the damaged end should be cut and a new pipe section be used to make a new connection; following steps 2-4 above for pipe connection.

PIPE CONNECTIONS

PIPE CONNECTION USING PRESS SLEEVE FITTINGS



1. Use only purpose designed pipe cutters. Measure and cut the pipe. Ensure pipe end is square and free from burrs. An uneven or jagged cut may result in an improper connection.



2. Cut pipe must be reamed and bevelled using an appropriate reamer to ensure a round and smooth pouring angle on pipe end.

Please take extra care while reaming.



3. Insert the fitting fully into the pipe making sure the pipe can be seen through all witness holes in the press sleeve.

NOTE – If an incorrect connection is made, the defective joint must be removed and replaced with a new fitting.



4. With a manual tool, close the handle bars fully until the pressing tongs are completely closed. Partial closing of the handle bars may result in an incomplete connection. Position the tool so the press sleeve is completely covered by the tool jaws. Keep the tool at a 90° angle to the fitting.



5. With a battery operated tool, hold down the inching switch until the pressing tongs are completely closed indicated by an acoustic signal.

Reminder: This same Procedure should be followed when making a pipe connection using Watertite multilayer (Pex-Al-Pex) pipes.

IMPORTANT:

- PEX- AL- PEX should be connected with either Watertite Push - Fit or Press Sleeve fittings only.
- Compression Sleeve fittings should NOT be used, to connect PEX - AL -PEX pipe.

KEY INFORMATION

WATERTITE KEY INFORMATION

- WATERTITE piping systems should only be installed by a qualified and licensed plumber.
- WATERTITE should always be installed in accordance with the New Zealand/Australian Building Code and AS/NZS 3500 National Plumbing Code and any local authority water requirements.
- WATERTITE should NOT be used when exposed to petroleum solvents.
- WATERTITE piping must be shielded or painted to protect from UV light.
- WATERTITE is manufactured to AS/NZS 3500 National Plumbing Code.
- WATERTITE pipes must be bent using appropriate bending tools.
- WATERTITE pipe must be reamed and bevelled using appropriate reaming tools.
- WATERTITE pipe and fittings should be installed using a WATERTITE tool. Other manufacturers' tools may be used to install WATERTITE. **Please check with LEAP for tool compatibility.**

PIPE BENDING

WATERTITE pipe can be bent easily – care should be taken not to kink or damage the pipe. Pipe must always be bent prior to crimping the fitting. It is recommended that the minimum hand-bending radius be 5 times the outside diameter of the pipe for 16mm and 20mm pipe, and 8 times the outside diameter for 25mm pipe. The recommendation for minimum spring bending radius is 3 times the outside diameter of the pipe for 16mm and 20mm pipe and 4 times the outside diameter of the pipe for 25mm and 32mm pipe.

MINIMUM SPRING BENDING RADIUS

| PIPE | RADIUS |
|------|---------------|
| 16mm | 48mm Minimum |
| 20mm | 60mm Minimum |
| 25mm | 100mm Minimum |
| 32mm | 128mm Minimum |

MINIMUM HAND BENDING RADIUS

| PIPE | RADIUS |
|------|---------------|
| 16mm | 80mm Minimum |
| 20mm | 100mm Minimum |
| 25mm | 200mm Minimum |

IMPORTANT NOTE: If pipe radius required is less than the above limits, use an elbow fitting. If for any reason the pipe is kinked or damaged, the faulty section should be replaced. Never apply bending forces to a crimped fitting.

CLIPPING PIPE

All WATERTITE pipe should be retained in position by clips at intervals complying with AS/NZS 3500.

TESTING

All installations should be tested as per the requirements of AS/NZS 3500. All joints and fittings should be inspected for leaks.

WATERTITE WARRANTY



WaterMark

AS/NZS2492

AS/NZS2537

AS4176

ApprovalMark



WATERTITE pipes and fittings, installed by a licensed plumber in accordance with the current published installation guidelines, are warranted against material or manufacturing defects for a period of 25 years.

WATERTITE is manufactured under Watermark Licence Nos WM74687, WM74713 and WM74712 is approved for use in all Australian States and Territories, and New Zealand subject to the installation requirements outlined in the National Plumbing and Drainage Code, AS/NZS 3500 parts 1 & 4, and any local water authority requirements.

FOR MORE INFORMATION ABOUT WATERTITE CALL

1800 173 000

Leap Australasia Pty Ltd
95b Cheltenham Road
Dandenong
Victoria 3175
Australia

t: + 61 3 9791 2462
f: + 61 3 9791 2409
www.leapltd.com.au

